

SWISSDIS



Swissdis AG
Grasweg 7
CH-4911 Schwarzhäusern

Tel.: +41 62 919 44 00
Fax: +41 62 919 44 01
info@swissdis.ch
www.swissdis.ch



SPECIFICATIONS

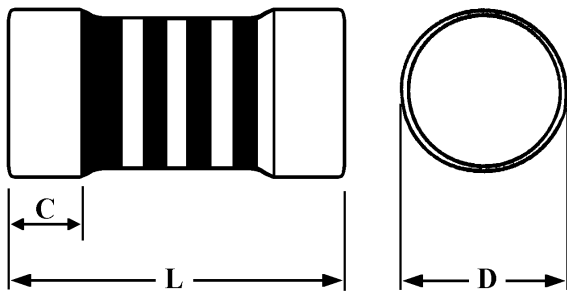
MELF Metal Film Resistors

MFM 0204 / 0207-Serie

Version November 2017

MELF Metal Film Resistors

M-TYPE



Coating Color : Blue.

Marking : Color Bands.

※4 bands: 1ST = Number,
 2ND = Number,
 3RD = Number,
 4TH = Multiplier.

Dimensions :

Type	Size	Dimensions (mm)		
		L	D	C
MFM	0207	5.7±0.2	2.2±0.1	0.8±0.2
	0204	3.5±0.2	1.45±0.1	0.6±0.1

Range :

TYPE	SIZE	POWER RATING	MAX. WORKING VOLTAGE	MAX. OVERLOAD VOLTAGE	RESISTANCE RANGE
					±1%(F); ±0.5%(D); ±0.25%(C); ±0.1%(B); (E-96) (E-192) (E-192) (E-192)
MFM	0204	1/4Ws(0.25W)	200V	400V	10Ω~1MΩ
	0207	1/2Ws(0.5W)	300V	600V	
		1Wss(1W)	400V	700V	

※Rated-Voltage= $\sqrt{P(W) \times R(\Omega)}$ or Max. working voltage ,whichever lower.

Characteristics

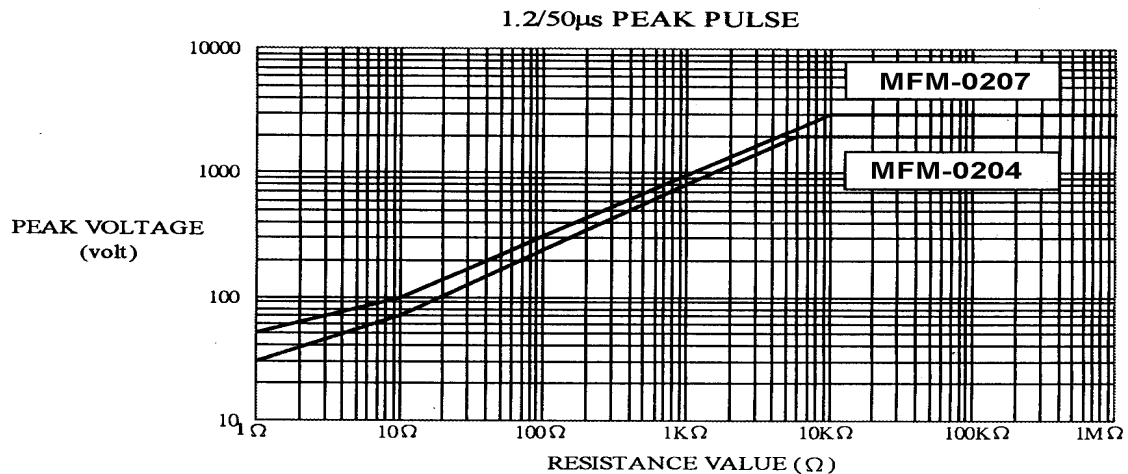
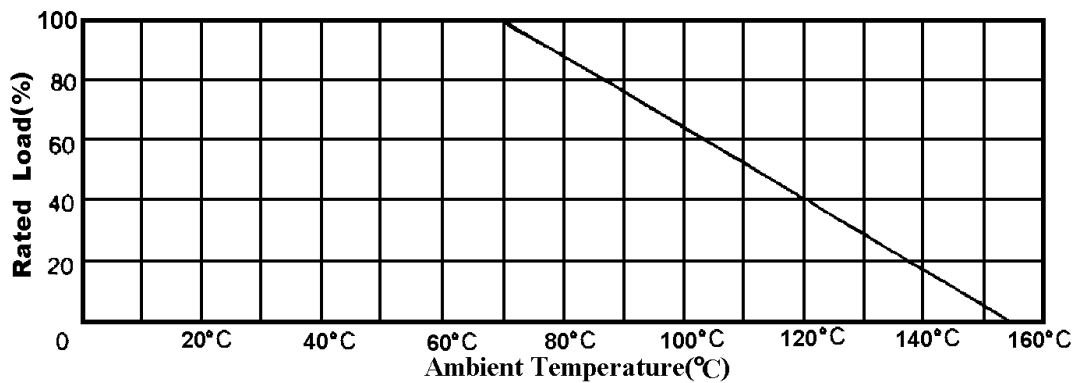
Item	Characteristics	Test Method
1. Operating Temp. Range	-55°C~155°C	
2. Temp. Coefficient	±50ppm/°C ; or ±25ppm/°C ; or ±100ppm/°C	JIS-C-5202; 5.2
3. Short time overload	±(0.5%+0.05Ω)	JIS-C-5202; 5.5
4. Pulse overload	±(0.5%+0.05Ω)	JIS-C-5202; 5.8
5. Temperature cycling	±(0.5%+0.05Ω)	JIS-C-5202; 7.4
6. Load Life	±(1%+0.05Ω)	JIS-C-5202; 7.10
7. Resistance to soldering heat	±(0.5%+0.05Ω)	JIS-C-5202; 6.4
8. Solderability	90% Coverage/Min	JIS-C-5202; 6.5
9. Non-Combustibility	No evidence of flaming	UL-94 ; V-0
10. Surge Test	±(0.5%+0.05Ω)	Surge spec=1.2/50μs Period=1 sec Number of surges=50

MELF Metal Film Resistors

M-TYPE



Derating Curve:



Classification

<u>MFM</u>	<u>0204</u>	<u>1/4Ws</u>	<u>121Ω</u>	<u>F</u>	<u>T</u>	<u>50</u>
STYLE	SIZE	POWER	RESISTANCE	TOLERANCE	PACKING	PPM
	0207	1/4Ws	E-96 : ±1%	F = ±1%	T = Tape/Reel	15
	0204	1/2Ws	E-192 : ±0.5%	D = ±0.5%		25
		1Wss	±0.25%	C = ±0.25%		50
			±0.1%	B = ±0.1%		100

Part No.:MFM-0204-1/4Ws-121R-FT50

MELF Metal Film Resistors

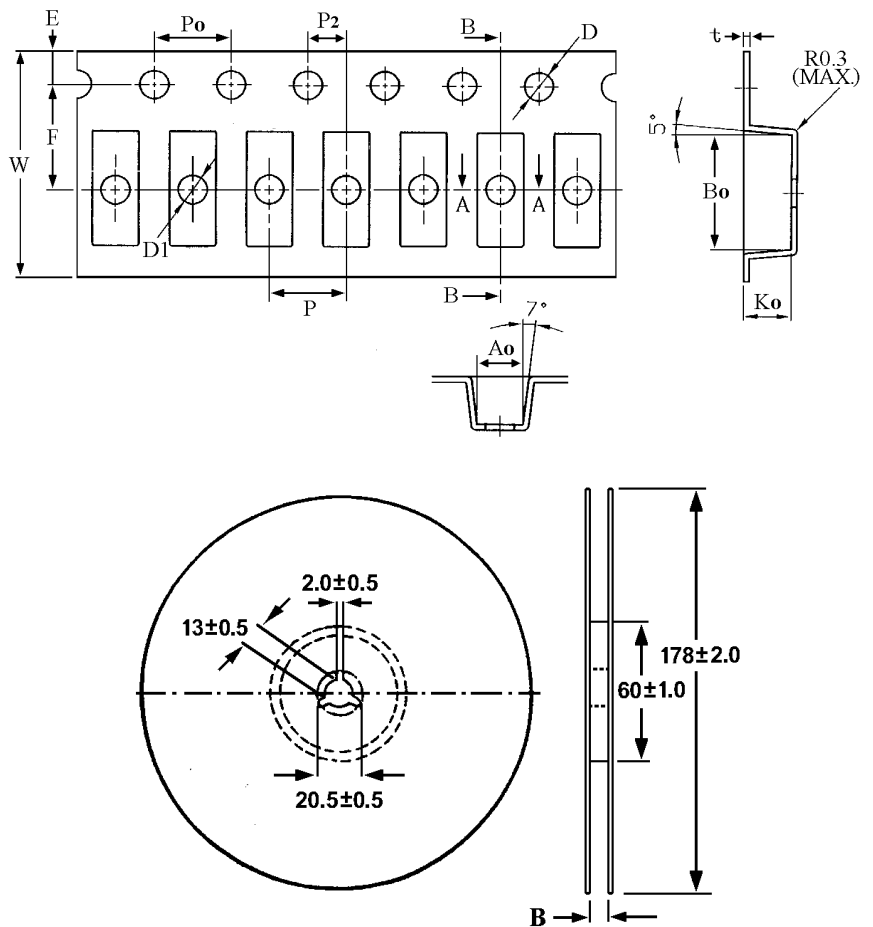
M-TYPE



Packaging

SIZE	TAPE / REEL
0207	2000pcs
0204	3000pcs

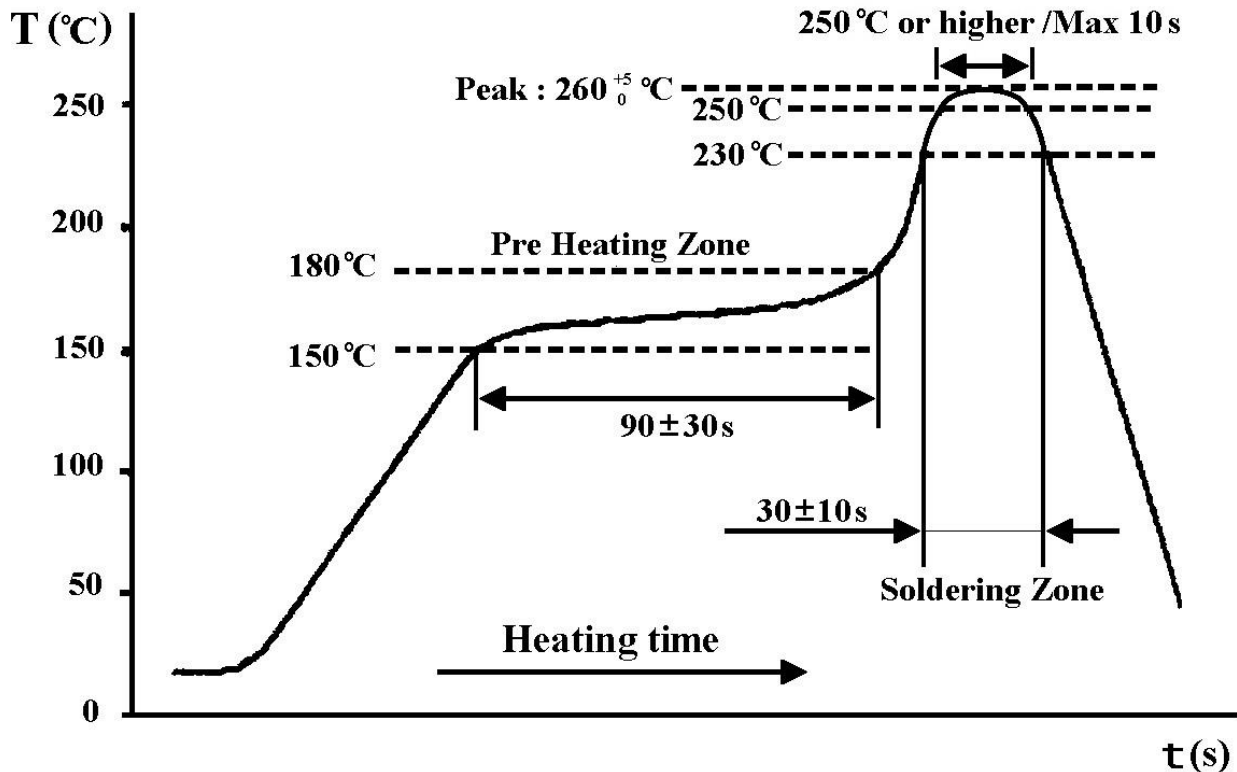
TYPE	M-Type	
SIZE	0207	0204
W	12.00±0.10	8.00±0.10
P	4.00±0.10	4.00±0.10
E	1.75±0.10	1.75±0.10
F	5.50±0.05	3.50±0.05
P2	2.00±0.05	2.00±0.05
D	1.50±0.10	1.50±0.10
D1	1.50±0.10	1.00±0.10
Po	4.00±0.10	4.00±0.10
B	12.00±0.50	8.00±0.50
Ao	2.40±0.10	1.60±0.10
Bo	6.05±0.10	3.70±0.10
Ko	2.50±0.10	1.65±0.10
t	0.30±0.05	0.22±0.05



Remarks: RoHS Compliant

焊錫曲線(Soldering Profile)

Soldering Temperature Curve



IR Reflow Soldering

適用設備：

本公司產品使用低溫製程，適用於 IR Reflow(迴焊爐)表面黏著設備；比較不適用 Wave Soldering(波峰焊)，可能會有保護層及正導脫落，而造成阻值漂移之風險。

Equipments Applicable

Our company's products are produced under low temperature processing applicable to IR reflow surface mounting devices. It is comparatively not applicable to wave soldering which will have the possibility of the risk ablating the element protection layer and the front conductor that shall cause the drift of the resistance value.